

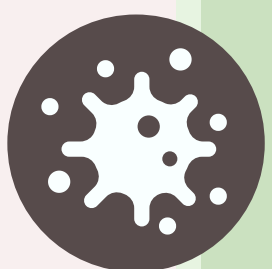
# KEY QUESTIONS ABOUT NEWBORN HEARING SCREENINGS

Is it true that infants who do not pass the newborn hearing screening typically just have middle ear fluid?



**No**, 1.8 out of every 1,000 newborns were identified as Deaf or Hard of Hearing (DHH) at birth. Infants that do not pass the hearing screening due to middle ear concerns should be scheduled for evaluation by an otolaryngologist (ENT) and/or audiologist within 6-8 weeks.

Is it ok for infants to have multiple ear infections?



**No**, infants that have had multiple ear infections or have other risk factors for a hearing condition have an increased risk for hearing issues.

Are hearing test still needed after a child receives pressure equalizer (PE) tubes?



**Yes**, children should be reevaluated 2-3 months after tubes are placed to identify if a permanent hearing condition exist. This evaluation should include tympanometry testing to ensure tubes are open and an audiogram to confirm hearing is sufficient for the development of speech and language skills.

Do children that are identified with a non-permanent hearing condition need ongoing check-ups?



**Yes**, children that are identified with a non-permanent hearing condition should be reevaluated by an ENT and/or audiologist 2-3 months after the initial diagnosis of a non-permanent hearing condition caused by fluid/infection. Follow up should occur sooner if the child has had multiple ear infections or has other risk factors for a hearing condition. Children with a non-permanent hearing condition lasting longer than 3 months should be referred to early intervention services such as speech language and developmental services. Referral to EI services should occur sooner if the hearing condition presents a risk for delays in the development of speech and language skills.

Children should be talked to, played with, and exposed to various communication strategies often to promote language development. Contact the pediatrician ASAP if the child is not meeting the hearing, speech and language milestones.



All infants should receive a hearing screening before one month of age.



All infants who do not pass the screening should receive a diagnostic evaluation before three months of age.

Contact the Infant Hearing Program at 501-280-4740 or visit [www.arhealthyhearing.com](http://www.arhealthyhearing.com) for more information.