

---

---

# THE PLUMBLINE

---

---

April 2012 Issue

---

---

## NEW PLUMBING CODE FOR 2012

It has been decided to hold up on the adoption of a 2012 State Plumbing Code at this time. However, a minor revision to Section 427.2 of the Code must occur to satisfy the requirements set forth in Act 98 passed in the 2011 legislative session. This Act requires wording changes used in reference to individuals with disabilities. It is proposed to delete this section in its entirety from the Code. As always, you will be notified of public hearings, etc., as things develop.

## COMMITTEE OF PLUMBING EXAMINERS HEARINGS FOR 2012

NAME	LIC. STATUS	FINE	CITY
Albert Ball	Licensed	\$3,000	Springdale
Tyler Beaudreau	Unlicensed	\$4,500	North Little Rock

## HAVE YOU RENEWED FOR 2012?

Is your license current for 2012? How about your employees?

Licensing renewals were sent out in November so everyone would have plenty of time to get them renewed.

Master Plumbers should check their Journeyman and Apprentices to insure they have a current license for 2012. Anyone without a current license will be considered as plumbing without a license that could result in a civil action against you.

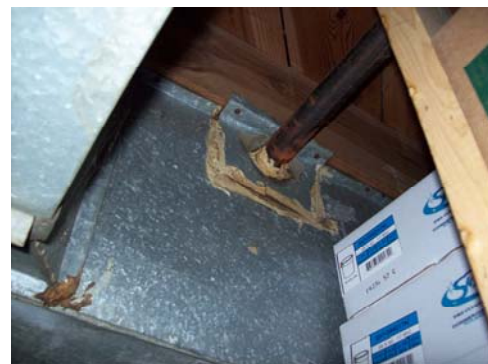
If you or your employees have changed their address during the year, make sure that you notify our office of the address change.



## GAS CODE REMINDER

Section 404.1 Prohibited locations. "Piping shall not be installed in or through a circulating air duct, clothes chute, chimney or gas vent, ventilating duct, dumbwaiter or elevator shaft."

An air supply duct or areas that create a shaft that produces a path for the gas to travel are considered to be locations where the problem of a gas leak could be compounded by spreading the gas or any resultant fire throughout the building. Also, in some locations, the gas piping could be subject to deteriorating because of temperature or corrosive conditions such as in air ducts or chimneys.



## BACKFLOW PROTECTION

In the "Minimum Standards for a Cross-Connection Control Program" you can find the minimum requirements for a water system backflow program along with a list of the different types of facilities and their hazard rating.

When it is found that a commercial, industrial or even a residential water connection requires a backflow device the backflow device cannot be by-passed for any reason, unless the by-pass has a backflow preventer installed in the by-pass of an equal or greater backflow protection.

In the “Rules and Regulations Pertaining to Public Water Systems”, Section XVI Cross Connections, A, Prohibited Services, states in part that “Domestic water shall not be supplied to any device, equipment, or service connection which may permit the contamination of the water supply by back siphonage or backflow. Provisions of water service to any service connection found to contain a cross-connection shall immediately be terminated, unless a backflow prevention device of a type approved by the Arkansas Department of Health is installed between the cross-connection and the public water system.

In the “Policies and Procedures for Backflow Prevention Devices Location and Installation” publication, there are multiple types of commercial facilities listed along with their required type backflow protection.

In the “Minimum Standards for a Cross-Connection Control Program” you can find the minimum requirements for a water system backflow program along with a list of the different types of facilities and their hazard rating.

When it is found that a commercial, industrial or even a residential water connection requires a backflow device the backflow device cannot be by-passed for any reason, unless the by-pass has a backflow preventer installed in the by-pass of an equal or greater backflow protection rating.

<http://www.healthy.arkansas.gov/programsServices/environmentalHealth/Engineering/Pages/ReportsandForms.aspx>

**SEE WHAT WATER HEATERS CAN DO**



Please be diligent when installing water heaters...protect yourself and the consumer:

- The relief valve shall be installed in the shell of the tank.
- All relief valve drains shall drain by indirect waste.
- The drainage piping from a water heater shall not be trapped.
- Relief valve piping shall be the same size as the water heater.
- A full open valve shall be used for water heaters.
- Water heaters installed in a closed loop system shall be provided with thermal expansion protection.
- Water heaters installed in an area where leakage will cause damage shall be provided with a drain pan.

**2012 Inspector Training Dates  
(Bring Code Books!)**

01.19.12 - 01.20.12	A.R.W.A. 240 Dee Dee Lane	Lonoke
02.16.12 - 02.17.12	Ouachita Technical College Lector Hall #1 College Circle	Malvern
03.15.12 - 03.16.12	Baxter Co. Emergency Service Training Center 170 Dillard Road	Midway
04.19.12 - 04.20.12	SAU Tech - Ross Center 746 California Street	Camden
05.10.12 - 05.11.12	Heber Springs Community Center 201 Bobby Jean Lane	Heber Springs
08.16.12 - 08.17.12	A.R.W.A. 240 Dee Dee Lane	Lonoke
09.13.12 - 09.14.12	Paragould Community Center 3404 Linwood Drive	Paragould
10.11.12 - 10.12.12	Rogers Youth Center 315 West Olive	Rogers
11.08.12 - 11.09.12	Dardanelle Community Center 2011 Hwy 22	Dardanelle

\*\*\*\*\*

**DO YOU HAVE SOMETHING TO SAY?**

If you would like to offer comments, suggestions, or ideas for articles, please let us know. The articles must be about industry related activities such as public service announcements, obituaries, technical papers, or opinions. You may contact Bob Higginbottom @ 501-661-2642.